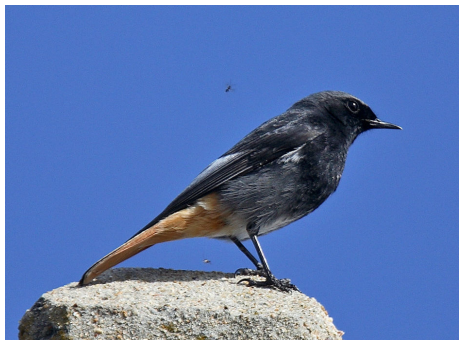


The growing importance of ecology in BREEAM/CSH assessments

Although ecology is a key element in the BREEAM/CSH assessment process it has up until now been largely overlooked by developers and self-builders. This is not surprising as it is a specialist area that often requires input from external contractors. However, changes in regulations and the expectations of local authorities have and will continue, to raise the bar and we believe that it will become increasingly necessary to involve ecologists in such assessments.



To some, ecology may seem like an unnecessary complication. However, it can provide a substantial positive enhancement to any building scheme. The ecology credits are highly weighted, often relatively simple to obtain and considering their contribution to the overall score, represent excellent value for money.

A key element to any building scheme is the delivery of high quality advice without delays. Therefore responsiveness and expertise you can

trust are key components to the successful delivery of any service.

Biocensus are an experienced ecological consultancy focused on providing solutions in support of BREEAM/CSH assessments. We employ a UK-wide network of Suitably Qualified Ecologists (SQEs) all of whom are members of the Institute of Ecology and Environmental Management (IEEM). Our approach combines clear understanding of what is required with highly qualified personnel across the UK, enabling our clients to receive a highly professional and responsive service.

To find out more about how we can help with your BREEAM/CSH requirements please contact Biocensus on 0845 459 4810 or email us at enquiries@biocensus.co.uk.



biocensus

The Tramshed, Beehive Yard, Walcot Street, Bath, BA1 5BB

Tel: 0845 459 4810

E-mail: enquiries@biocensus.co.uk

Website: www.biocensus.co.uk